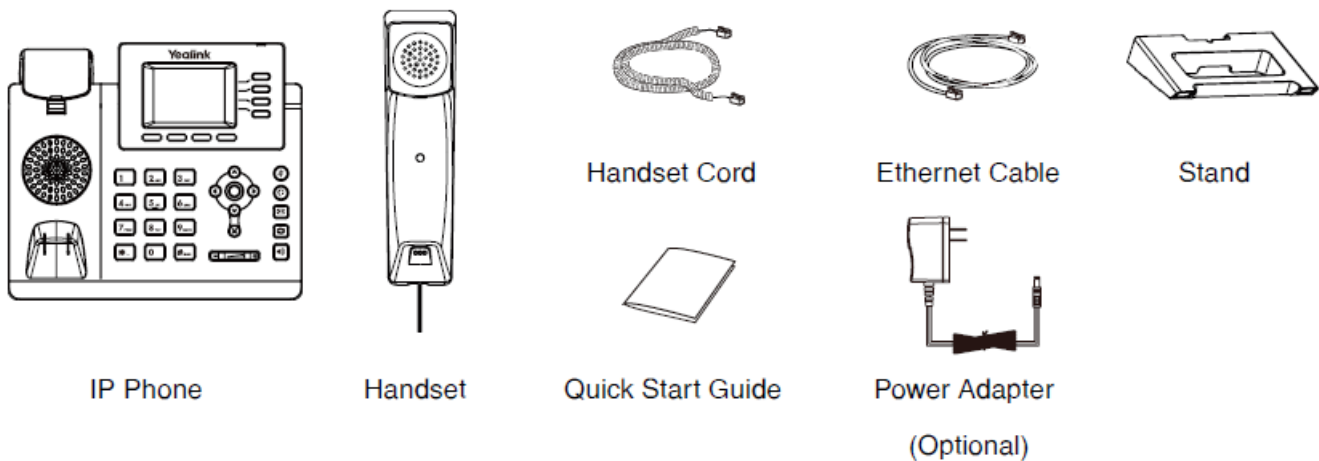


# SIP-T33P/T33G

## Package Contents

The following items are included in your package. If you find anything missing, contact your system administrator.

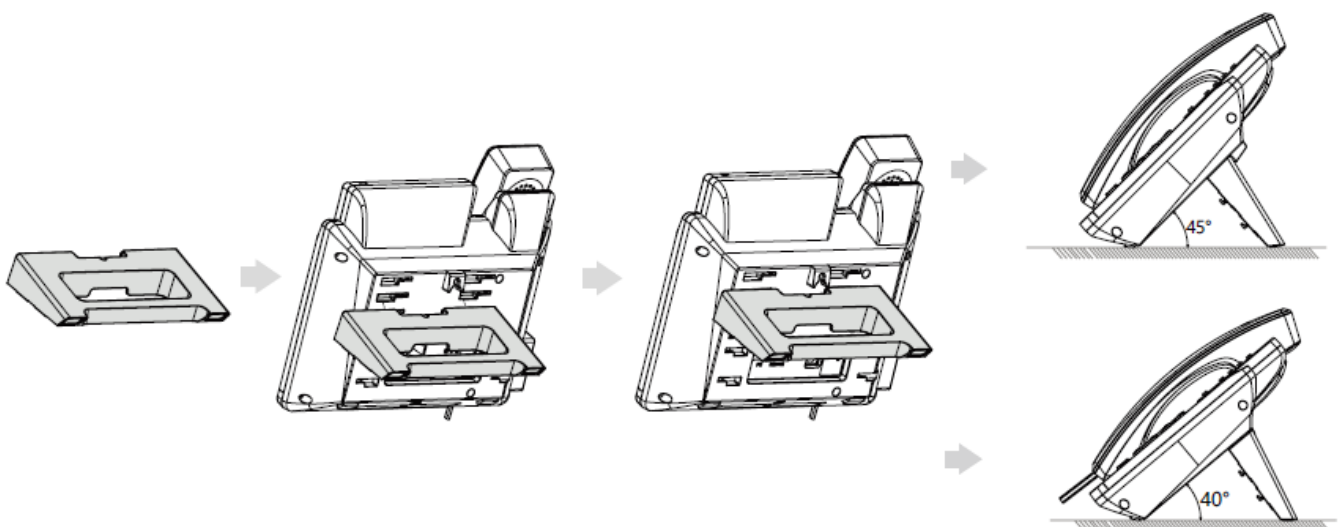


### TIP

We recommend that you use the accessories provided or approved by Yealink. The unapproved third-party accessories may result in reduced performance.

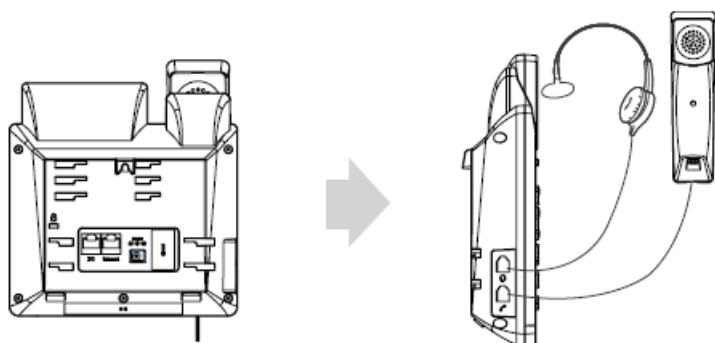
## Assemble Phone

1. Attach the stand.



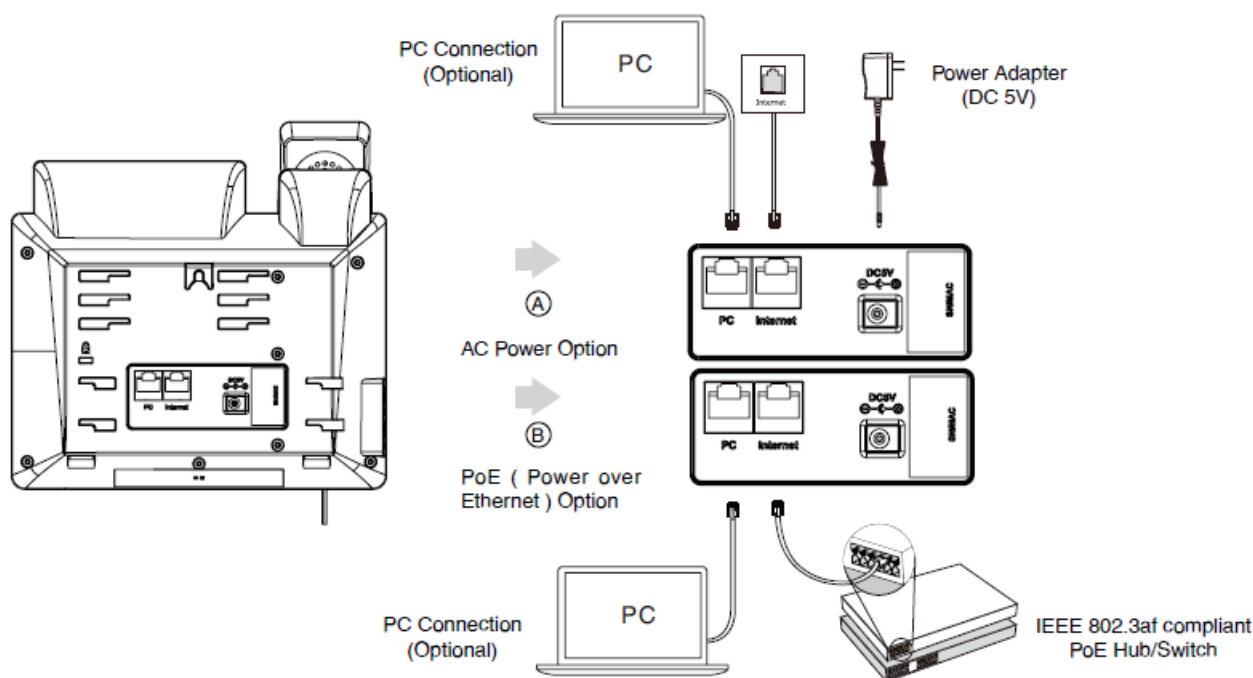
You can also mount the phone to a wall.

## 2. Connect the handset and optional headset.



## 3. Connect the network and power.

You have two options for network and power connections. Your system administrator will advise you which one to use.



### NOTE

- The IP phone should be used with Yealink's original power adapter (5V/2A) only. The use of the third-party power adapter may cause damage to the phone. If you are connecting a PC to your phone, we recommend using the Ethernet cable provided by Yealink.
- If inline power (PoE) is provided, you don't need to connect the power adapter. Make sure the hub/switch is PoE-compliant.